

PA Server Monitor

Datasheet | Power Admin

Testimonials

“ I've worked with several different monitoring systems in my career, and *nothing holds a candle* to PA Server Monitor.”

-Adam A, Symantec

“ The *value we get* for the price paid and the functionality & support vs. any other competitor is *outstanding.*”

-Alejandro, CAT/MAQSA

“ You don't know how much time & money *you guys have saved* us.”

- Andreas N, Astra Tech Inc

“ We are very impressed with PA Server Monitor and even more *impressed with your support* which is 50% of any product in my book.”

- Ben G, System C Healthcare

“ Amazing program I have to say, I *absolutely love it.* I don't have to guess whether my servers are down or not now.”

- Michael D, USA

Simple

Simplified navigation and configuration provides a superior user experience.

Scalable

One simple installation enables you to monitor over 1000+ devices.

Reliable

Designed with the level of quality and dependability thousands of IT professionals have come to expect from Power Admin.

Benefits

- **Easy to learn with simple navigation:** Download, install and configure PA Server Monitor™ for hundreds of Windows or Linux servers/devices with just a few clicks. Our customers consistently tell us PA Server Monitor™ is the *easiest* to use in its class.
- **Agentless Monitoring:** Use Windows RPC, SNMP, and monitor-specific protocols to centrally monitor remote servers without requiring an agent to be installed.
- **Remote Site Monitoring:** Monitor computers and devices at remote sites without needing a VPN or agent on each device.
- **Application Monitoring:** Monitor Exchange servers, Microsoft SQL servers, IIS servers, Oracle servers and more with unmatched customization.
- **Powerful:** Monitor 1000+ servers/devices from a single installation via Satellite Monitoring Services.
- **Advanced Reporting:** Create reports on any system resource seamlessly on an embedded management-free database or with MS SQL Server.
- **Save Time and Money:** Status reports and alerts help you stay on top of your IT infrastructure without manual monitoring. Work from home or on the road as easily as from the office.



PA Server Monitor

Testimonials

“ Very happy with the app so far. It **blows away** [a major competitor]”

-Sandy H, Family Insurance Sol

“ **Insanely efficient** to set up.”

-Glenn M, Cogent Consulting

“ We have relied on PA Server Monitor since 2007 in our mission critical environment. It has **never failed** us - ever. That's hard to say about a lot of applications/services. It's rock solid and I have no hesitation in recommending it.”

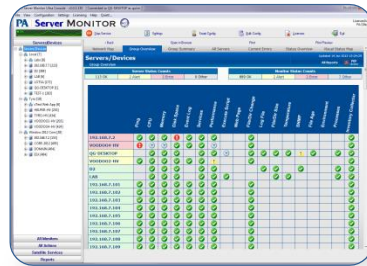
-Clinton T, logiforms, Canada

“ Your product is by far **the best** I have ever used in this field, and I hope we can continue to work together.”

-Riley D, L4U Library Software

“ PAM (as we call it) is one of the best tools in our IT tool belt and consistently helps me to stay ahead of the curve regarding our datacenter. Thanks for **a great product.**”

-Jason M, Image API, Inc



PA Server Monitor's sleek design and user-friendly layout provide users a dashboard for managing server capacities using disk space monitors, ping response, CPU & memory usage monitors & more, all with a customizable reporting system. You can also limit access levels for any number of specified users.



Free Android & iPhone applications that have been designed specifically for PA Server Monitor help you keep track of your servers & networks while you are on the go. Notifications via SMS are also available for other mobile devices.



Avoid server failures by using the updated charting feature, giving server managers a way to quickly and easily recognize potential server failures. Set up alerts so you can automatically warn your team at the first sign of any potential failures. Predict full disks *before* they cause problems.

Features

- **Powerful, Robust Monitoring:** Monitor Windows, Linux, and other network devices, etc. Monitor 1000+ servers/devices from a single installation and more via Satellite Monitoring Services. Many types of monitors including:
 - ✓ CPU, Memory & Network Usage
 - ✓ Event Logs
 - ✓ Disk Space
 - ✓ Ping Response
 - ✓ SNMP and Traps
 - ✓ Running Processes
 - ✓ Running Services
 - ✓ Changed files and/or directories
 - ✓ Log Files
 - ✓ Web page content and load times
 - ✓ Server & Room Temperatures
- **Rich Reporting:** Status reports for servers/devices, group summaries, uptime, and historical statistics. Reports are viewable via HTTP, can be password protected, and can be delivered via email.
- **Agentless Monitoring:** Nothing needs to be installed on monitored servers.
- **Satellite Monitoring Service:** Supports full monitoring of remote offices or locations across firewalls, including across the Internet without a VPN or the need to open a remote firewall (available in Ultra edition).
- **Bulk Config:** Speed configuration activities by making broad configuration changes at once to many servers/devices with just a few mouse clicks.
- **Smart Config:** Quickly create and customize default monitors for a list of computers that you can paste into the Console, or discover via Ping Sweep.
- **Error Auditing:** Make sure critical errors don't get overlooked.